

SOME OF THE WAYS YOU CAN HELP US!

DONATE:

- **Directly:** to our horse Rescue through cash, check, credit card, or PayPal. We are a 501 (c) (3) non profit charity. If you prefer, donate to our local feed store. Futrals Feed Store on SR80 at (239)334-3431. Our feed store will take phone in credit card orders for feed and hay.
- **Unwanted items:** to our 'Horse Rescue - Barn Sales'. Clean out your garage, barn, closet, etc. We will arrange for pick up.
- **Aluminum cans:** to help us with our rescue cost. Save your cans for us to recycle, we will arrange for pick up.
- **Services and Supplies:** to the Rescue. We always have a need for both. Services such as marketing, accounting and web operating. Supplies such as fencing material, buckets, dirt, and office items. Can't think of what we might need? Just contact us.

SPONSOR:

- **A Rescued horse.** Every little bit helps the horses. If you can see yourself donating on a monthly or bi-weekly basis then this is for you. Get updates on your special rescue along with pictures and visitation rights.
- **The rescue as whole.** To be a continual sponsor of SWFHR is an honorable position. You will be recognized (on our website and at our major events) as a major part of how we keep the Rescue operating.
- **An event:** It takes money to organize events. Donated items and services reduce costs yet there is still a need to pay for some things
- **A Building Project:** We have started work on a new facility off SR31. There are numerous structures to be built and fencing to be done. With your sponsorship of any one or many of the items at hand comes our offer of named recognition for the life of this organization on any structure sponsored in its entirety. If interested please contact Matt (239) 822-5366 or matt@swfhr.org

ADOPT:

- Giving a loving home for one provides an opportunity for another equine to be saved. Do your research and be prepared for this.

DONATE • SPONSOR • ADOPT • VOLUNTEER

FEATURDED: **LADY**

Available for adoption or sponsorship

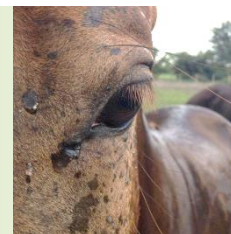
Little miss Lady was adopted in May of 2012 at the age of 6 months old. Her prior owner belived that they could not get their moneys worth out of this amazing mare when put up for sale. So instead chose to go as cheep as they could on caring for here as to not spend as much on her. Along with her and a few other siblings we rescued from this place and their neglectful care resulting in stunted growth.



Contact SWFHR for more information on Lady or any of our rescues and how you may be able to help any of them through sponsorship or adoption.

SWFHR

6801 NALLE GRADE ROAD
NORTH FORT MYERS, FL 33917-4633
Phone: (239) 567-4111
Fax: (239) 567-4112
WWW.SWFHR.ORG
INFO@SWFHR.ORG



V I C T O R

EIN: 46-2031584

All donations are eligible for tax deductions.
Make Checks payable to:
South West Florida Horse Rescue, Inc.



PubDate: 1508

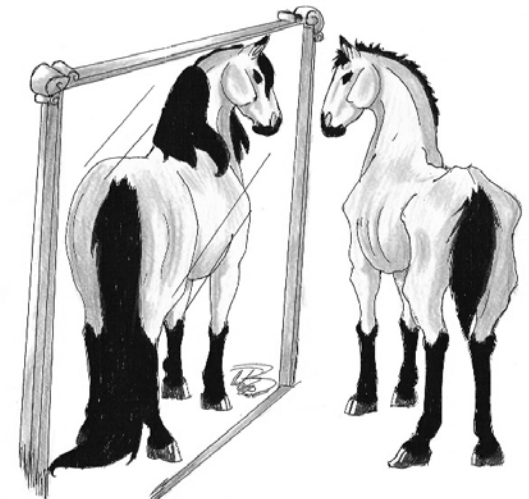


SWFHR

A Local 501(c) 3 Non Profit

EQUINE ADOPTIONS & SPONSORSHIPS

BEAUTY & STRENGTH



ARE WITHIN

DEDICATED TO OUR LOCAL HORSES

Adoptions

Our adoption process is tailored to suite our number one goal which is insuring that the equines who pass through our gates never see any such situation that they may have experience before coming to South West Florida Horse Rescue.

The basic steps for adoption are as follows:

- 1) Fill out our "**Adoption Contact**" form. This shows us your intent / request and will be used for initial information we need.
- 2) If your contact form and request matches any of our adoptable equines we will arrange for a viewing date and time.
- 3) If you find an equine that connects with you and your interests then you may begin the '**Adoption Application**' form.
- 4) The major steps to be completed for Adoption are the following:
 - a. '**Adoption Application**' form completed and returned.
 - b. An open source background check will be made of all parties affiliated with the potential adopted equine.
 - c. We will perform an inspection of the location were you intend to house your potential adopted equine. This includes inspection of boarding facilities and personnel if applicable.
 - d. Adopter's must be able to perform one on one time with the equine you've shown interest in at SWFHR's Facility.

** This step is crucial; we will evaluate both you and the equine to see the reactions of both parties. If it isn't a fit in our eyes it just simply isn't a fit. For the protection of both equines and humans if there seems to be no connection we will require you to spend more time with the equine before proceeding further. This step may take awhile so DO NOT expect to hand us money and leave with a horse on the same day.

- e. If an approval has been made the adopter will need to complete the final form

'Adoption Agreement' and commit to the standard \$350.00 adoption fee after which delivery details will be set.

Some other notes to be made about adopting from SWFHR. You may be approved however ownership for the adopted equine will be withheld for (1) year. During this time we request the adopter inform us of any pertinent updates. When signing the Adoption Agreement the Adopter commits to for (1) year; no selling, breeding, trading, or relocating without SWFHR approval. If at any time the adopter comes on hard times SWFHR will reobtain the equine for the purposes of rehoming if requested. Adopters agrees that SWFHR has the first right of refusal should a time come to that. On the anniversary of the adoption a condition report will be made by the adopter before a full release of ownership is done.

"We make it a point to have a life long contract with all equine we adopt for their wellbeing. You as an adopter agree to partner with us on this pact, that no equine rescued should ever need rescuing from a situation unhandled ever again."

Equine Sponsorship

A sponsored equine shares special bond with a set of people. It takes approximately \$8-\$12 a day to care for an equine. With rescued equines the numbers can stager depending on their medical condition. We offer the ability for individuals who've taken interest in any equine(s) at our facility to be a "Guardian" for that particular equine(s). With a monthly, by-monthly, or yearly sponsorship you've earned a place in the heart of not only SWFHR but the recovered sole of the equine(s) you so generously became a "Guardian" for. "Guardian's" come in many forms not just people who own equines but others who just have a heart for animals who need to recover from bad situations.

Steps to achieve "Guardian" status require one to first fill out the '**Guardian Sponsorship**' form which will soon be available online, one can pick one up at any event we have, at the SWFHR Facility, or we can email you a .pdf form. Guardians may support as many equines as they choose. Support may be in the form of cash/check, credit or PayPal.

We are working on direct withdrawals from one's banking institution.

With "Guardian" status those who do not mind to be recognized will be listed in all manners of mention on paper, internet and voice. Also there will be a "Guardian" board outside each equines stall to represent what guardians are watching over the equine(s).

All sponsorships are not a mandate and may be discontinued at any time. Once a sponsorship is discontinued so will be the Guardian status.

Adoptions and Sponsorships Available

If you may be interested and capable of giving a loving home to a rescued equine from SWFHR please contact SWFHR at (239) 567-4111 or adoption@swfhr.org

If you care to be a "Guardian" for any of our rescued equines and provide for them on their way to a new loving life please contact SWFHR at (239) 567-4111 or sponsor@swfhr.org

Due to the changing nature of available equines at SWFHR you must contact us to find out the most current information of available. You may also view our website or Facebook page to see photos and descriptions of the current available equines.

A COPY OF THE OFFICIAL REGISTRATION AND FINANCIAL INFORMATION MAY BE OBTAINED FROM THE DIVISION OF CONSUMER SERVICES BY CALLING TOLL-FREE (800-435-7352) WITHIN THE STATE. REGISTRATION DOES NOT IMPLY ENDORSEMENT, APPROVAL, OR RECOMMENDATION BY THE STATE. - (REG#CH40783)

